



# What are my next steps?

A TMS+ Post 16 guide

## Contents

Post 16 Options	1-2
Qualifications	3-4
Opportunities in Gloucestershire	5-7
Further Support	8
Helpful Websites	9
What TMS+ can offer	10

## Post 16 options

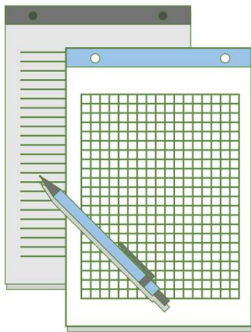
When looking at your career, you need to consider what's going to be the best option for you personally. It's a good idea to consider other ideas as a backup, in case things change or you decide to do things differently. You should speak to those around you about your options and how they can support you, for example:

- your mentors
- your parents or carers
- staff or advisers at school, college or training providers
- TMS+ staff



If you enjoy what you're doing in your next steps, you'll get more out of it. You might want to consider:

- which subjects you have enjoyed studying so far
- which subjects have not been available to you but could be in further education
- exploring careers to find out which job sectors you might enjoy



### Your options

Once you have left school, there are 3 main pathways you can take:

- stay in full-time education
- start an apprenticeship
- spend 20 hours or more a week working or volunteering, alongside part-time education or training

### Full time education

If you decide to stay in full-time education, you could study subjects, a course or more technical/vocational studies. Some careers may require specific qualifications, so it's best to research the option you're interested in and where it can lead. Your full-time education options include:

- A-levels which you can do at college
- Vocational Technical Qualifications (VTQ) such as BTEC or Cambridge technical
- T-Levels which you can do at a further education college

### Starting an apprenticeship

Apprenticeships are real jobs which combine work with training and study. You can apply for an apprenticeship whilst you're still at school. You'll earn a wage, gain a qualification and

experience and can put what you learn into practice. In some cases, you may be offered a job at the end of your apprenticeship.

### Traineeships

A traineeship is a programme for young people, who want to work, but need help gaining an apprenticeship/job. Traineeships give you the opportunity to develop new skillsets by the employers, and the workplace experience to enhance long-term career development.



### Combining work and study

Although you must remain in either education or training until you turn 18, this does not mean that you cannot earn a wage or gain work experience at the same time. There are several options, such as apprenticeships as outlined above, volunteering or working part-time for 20 or more hours per week.

### Volunteering

Volunteering after leaving school may not be paid work, but can help you to gain valuable skills and experience which will look great on your CV or university application and help you decide if that industry or role is right for you.

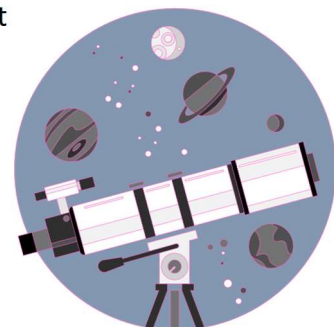
### Working part-time

Working part-time alongside study or training can help you to earn money, whilst continuing to work towards your qualifications. As well as a wage, you'll gain real-life experience of the workplace and can get a feel for whether this type of work would suit you in the future.

### Further information and support

You may be eligible for the 16 to 19 Bursary Fund. This can help you pay for things like books, travel or equipment if you struggle with education or training costs for your chosen path.

You can get support if you have a special education need or disability, including an education health and care (EHC) plan. This can help with choosing your next steps and getting extra help when you are in education, training or work.



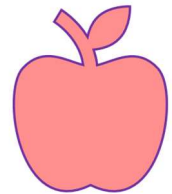
# Qualifications

Most qualifications have a difficulty level. The higher the level, the more difficult the qualification is. Usually, you need to complete the previous level in order to move on to then next. For example, you need a level 2 to complete a level 3. Some Jobs and colleges will have specific entry requirements. Here are some examples of qualifications and what level they are:

Entry level:

- entry level English for speakers of other languages (ESOL)
- entry level essential skills
- entry level functional skills
- Skills for Life

Entry level qualifications can help you build skills, increase your knowledge and boost your confidence. They are known as 'certificates' or 'awards', and are open to anyone interested in gaining a recognised qualification. They are great for anyone that is interested in expanding their knowledge, progressing onto a higher level or looking to get an apprenticeship/entry level role.



Level 1:

- GCSE - grades 3, 2, 1 or grades D, E, F, G
- level 1 ESOL
- level 1 essential skills
- level 1 functional skills
- level 1 national vocational qualification (NVQ)
- music grades 1, 2 and 3

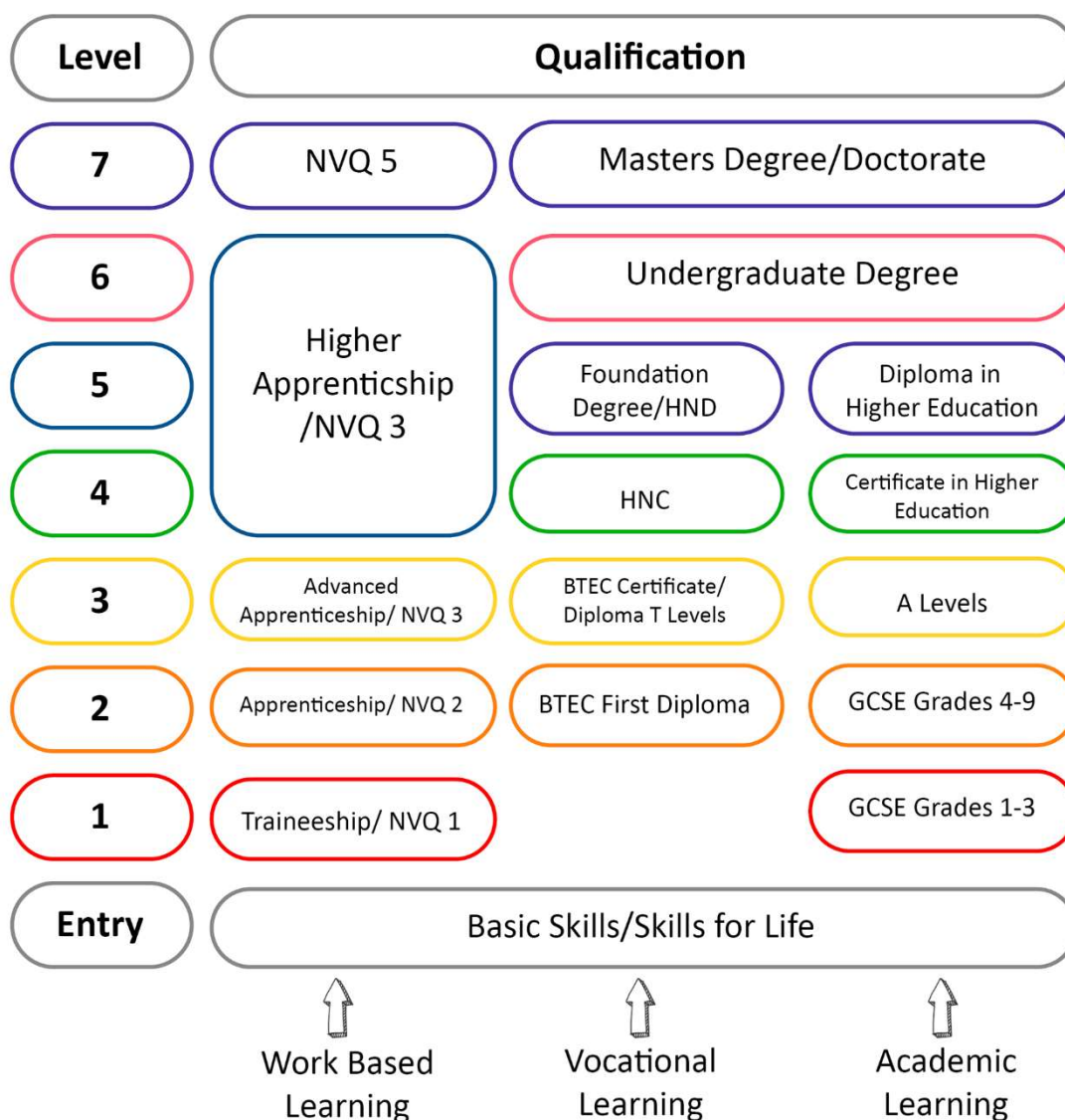
Level 2:

- GCSE - grades 9, 8, 7, 6, 5, 4 or grades A\*, A, B, C
- intermediate apprenticeship
- level 2 ESOL
- level 2 essential skills
- level 2 functional skills
- level 2 NVQ
- music grades 4 and 5

Level 3:

- A level
- advanced apprenticeship
- AS level
- level 3 ESOL
- level 3 national certificate
- level 3 national diploma
- level 3 NVQ
- music grades 6, 7 and 8
- T Level





## Opportunities in Gloucestershire

The opportunities below facilitate for young people who have not achieved the 'traditional' qualifications such as GCSE's. The following educational provisions are able to offer a range of awards and qualifications for a variety of levels.

### TMS (level 1 Sports course with the opportunity to progress to level 2)

Meadow Park Arriva House,  
Sudmeadow Rd, Hempsted, Gloucester GL2 5HS  
Telephone: 07494429419  
Email: Colin@tayloredmentoring.co.uk



'This qualification is designed for learners to develop basic skills and knowledge in sport. It supports learners to develop the skills and knowledge they need to progress to further study or employment. The flexibility of the qualification structure allows learners to tailor their program based on existing skills and interests or future career aspirations.

This qualification has been designed for any learner, regardless of age or employment status, who'd like to develop their understanding, skills and knowledge relating to the sport sector.'

### Prospects (Pre/Post 16 programmes)

Prospect Training Services,  
C4 Brunel Court, Waterwells business park, Gloucester, GL2 2AL  
Telephone: 01452 886 888  
Email: enquiries@prospect-training.org



'PTS offers a vast range of courses that can develop your skills and help you access different progression routes in the sector of your choice. The most important thing you should know is that flexibility is at the heart of everything we do, which means that we can tailor our courses to meet your needs.'

Prospects offers:

- Functional skills
- 'Young Mums To Be' and 'Parents with Prospects'
- A youth club called the Q Club
- Accreditations with many awarding bodies including Edexcel, OCR, ENTO and many more
- A variety of practical courses as well as Maths & English (up to level 2)

### Bridge Training (Post 16 courses)

Archdeacon Training Centre  
Archdeacon Street, Gloucester, GL1 2QX  
Telephone: 01452 411112  
Email: [hello@bridgetrainingltd.co.uk](mailto:hello@bridgetrainingltd.co.uk)



'We work as one of the top alternative education providers in Gloucestershire, bringing an ever-growing range of vocational training, as well as the fundamentals of maths and English, to a setting that is supportive, flexible and learner-centred.'

Our team of specialised and experienced teachers, tutors and well-being mentors are all dedicated to creating a friendly, supportive, safe and inclusive environment to maximise each learner's individual journey.'

Bridge Training offers courses in:

- Photography
- Art & Design
- Health & Social Care
- Beauty
- Hairdressing
- Maths & English

And more! Many of these courses are offered at entry level or level 1.

### Gloucestershire College (Post 16)

Gloucester Campus  
Llanthony Road, Gloucester GL2 5JQ  
Telephone: +44 (0)345 155 2020  
Email: [applications@gloscol.ac.uk](mailto:applications@gloscol.ac.uk)



'Gloucestershire College is an education provider with campuses in Cheltenham, the Forest of Dean and Gloucester. We deliver a range of professional and technical training, including T Levels and full-time courses for school leavers, apprenticeships, university-level courses, and courses for adults including online, short and part-time courses, just for fun courses and JobSmart programmes for pre-employment'

Gloucestershire College offers:

- Full-time courses (travel and tourism, constructions, health and social care etc.)
- Apprenticeships (business admin, hairdressing, engineering etc.)
- Short + part-time courses (motor vehicle, counselling, foundation studies etc.)
- Online learning (business, art, engineering etc.)
- Job seekers courses (IT, sports, business)

South Gloucestershire and Stroud College (14+)

Stroud College

Stratford Road, Stroud, Gloucestershire GL5 4AH

Telephone: 0800 0567 253

Email: [info@sgscol.ac.uk](mailto:info@sgscol.ac.uk)

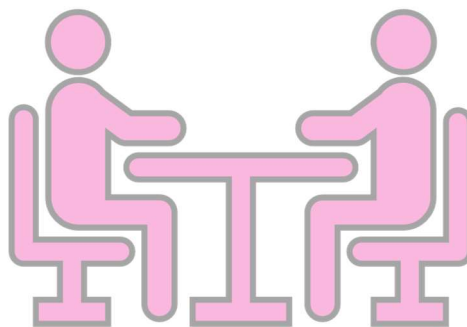


'We offer a vast range of courses in an even wider range of subjects from business to sport, performing arts to media so whatever you want to study, there's bound to be something for you.

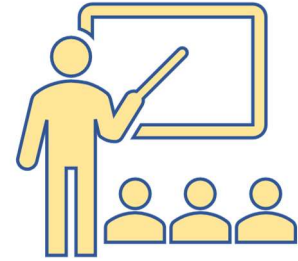
What's more, SGS has an excellent reputation for delivering work-based programmes, such as apprenticeships, higher apprenticeships and professional training, so if you're after a practical course that'll teach you the skills you need for your chosen career, you've come to the right place.'

Stroud College offers:

- GCSE's
- BTEC's
- A-levels and T-levels
- Pathways
- Vocational courses
- Apprenticeships



## Further Support



### Bursary

Eligibility: bursaries for young people in vulnerable groups

Students who meet the criteria, and who have a financial need, can apply for a bursary for vulnerable groups. The defined groups reflect that these students are unlikely to be receiving financial assistance from parents or carers, so may need a greater level of support to enable them to continue to participate. Bursary funding exists to help students with the cost of travel, to buy essential books, equipment or specialist clothing (such as protective overalls, for example). The defined vulnerable groups are students who are:

- in care
- care leavers
- receiving Income Support (IS), or Universal Credit (UC) because they are financially supporting themselves or financially supporting themselves and someone who is dependent on them and living with them, such as a child or partner
- receiving Disability Living Allowance (DLA), Personal Independence Payments (PIP) or Employment and Support Allowance (ESA)

### Travel

Bus Pass – Thinksmart Apprentice Travel Scheme

If you are a resident of Gloucestershire employed in a Gloucestershire apprenticeship and are aged 16-24, you may be entitled to a free Thinksmart bus pass for journeys to and from your placement. Your bus pass allows you to travel free of charge for up to 100 journeys on local bus services in Gloucestershire over the period of your apprenticeship.

16-25 Railcard

If you are between the ages of 16-25, you can purchase a railcard for £30 a year to receive a 1/3 off on train tickets including London underground.

### Shopping

Student discount

Apps such as Student Beans and Unidays can offer anyone with a student ID and student email address the ability to gain discounts on a variety of retailers ranging from JD Sports to Curry's PC World. The discounts available will vary throughout the year so it is worth waiting for special events such as 'Cyber Monday' for extra discounts.

## Helpful websites

Bewellglos – A website containing links to local charities and support groups in Gloucestershire on a variety of issues

<https://www.bewellglos.org.uk>

The Mix – Designed to support under 25's on topics such as money, housing, relationships etc. Also offers chat's and counselling.

<https://www.themix.org.uk/get-support>

Indeed – A job advertising website containing thousands of job openings around Gloucestershire.

<https://uk.indeed.com/>

National careers service – Offers information, advice and guidance on careers and offers courses to strengthen your employability skills.

<https://nationalcareers.service.gov.uk/>

Live Career – Provides you with advice and AI powered technology to enhance your CV.

<https://www.livecareer.co.uk/>

Young carers Glos – Supports Young carers in Gloucestershire

<https://www.glosyoungcarers.org.uk/>

Gov – What different qualifications mean

<https://www.gov.uk/what-different-qualification-levels-mean>

Gov - Apprenticeships

<https://www.findapprenticeship.service.gov.uk/apprenticeshipsearch>



## What can TMS+ offer?

### Learning Support

TMS+ are able to support young people completing their qualifications up to the age of 25. Although TMS+ is not a test centre, we are happy to help young people prepare for their exams including functional skills and GCSE's.

### ASDAN

ASDAN is an education charity and awarding organisation providing courses, accredited curriculum programmes and regulated qualifications to engage, elevate and empower learners with diverse needs.

TMS+ are able to provide learners with the opportunity to gain an ASDAN short-course qualification.

### AQA Unit awards

The Unit Award Scheme allows all students to engage with learning and have their achievements formally recognised. Learners are rewarded with a certificate each time they successfully complete a unit of learning. They can build up a portfolio of certificates to evidence their skills, knowledge and experience.

TMS+ are happy to register any students that are interested in achieving unit awards on to the programme and work towards achieving certificates in the young person's area of interest. Students are able to complete several unit awards while at TMS if they wish to.

